

Impaired autophagic flux mediates acinar cell vacuole formation and trypsinogen activation in rodent models of acute pancreatitis

Olga A. Mareninova, ... , Ilya Gukovsky, Anna S. Gukovskaya

J Clin Invest. 2013;123(4):1844-1844. <https://doi.org/10.1172/JCI69660>.

Corrigendum

Original citation: *J. Clin. Invest.* 2009;119(11):3340–3355. doi:10.1172/JCI38674. Citation for this corrigendum: *J. Clin. Invest.* 2013;123(4):1402. doi:10.1172/JCI69660. For Figure 2A, the authors did not indicate that the two lanes were noncontiguous. (A) LC3-I to LC3-II conversion (immunoblot) in pancreas of rats under conditions of fasting (for 17 hours) and pancreatitis (see Methods). ERK1/2 served as loading control. Lanes were run on the same gel but were noncontiguous. The authors regret the error.

Find the latest version:

<https://jci.me/69660/pdf>





Corrigendum

Impaired autophagic flux mediates acinar cell vacuole formation and trypsinogen activation in rodent models of acute pancreatitis

Olga A. Mareninova, Kip Hermann, Samuel W. French, Mark S. O’Konski, Stephen J. Pandol, Paul Webster, Ann H. Erickson, Nobuhiko Katunuma, Fred S. Gorelick, Ilya Gukovsky, and Anna S. Gukovskaya

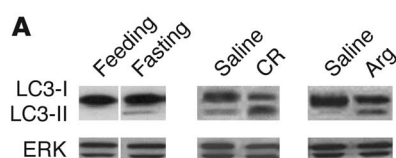

Original citation: *J Clin Invest.* 2009;119(11):3340–3355. doi:10.1172/JCI38674.

Citation for this corrigendum: *J Clin Invest.* 2013;123(4):1844. doi:10.1172/JCI69660.

For Figure 2A, the authors did not indicate that the two lanes were noncontiguous. The corrected figure and legend appear below.

(A) LC3-I to LC3-II conversion (immunoblot) in pancreas of rats under conditions of fasting (for 17 hours) and pancreatitis (see Methods). ERK1/2 served as loading control. Lanes were run on the same gel but were noncontiguous.

The authors regret the error.

NORTHWESTERN UNIVERSITY
Nephrology Research

The Division of Nephrology in the Department of Medicine of the Northwestern University Feinberg School of Medicine is recruiting full-time tenured or tenure-eligible physician scientists (rank to be determined based upon qualifications). Preferred areas of research interest include but are not limited to: vascular biology, basic mechanisms of kidney disease, clinical outcomes and clinical epidemiology related to renal disease. Qualified applicants will have an MD degree and be board certified in internal medicine and nephrology. The primary responsibility of the position will be to develop a funded research program. Participation in the clinical and education missions of the division is also anticipated. The search will be ongoing until a suitable candidate is identified.

Interested candidates should forward a letter of application and curriculum vitae to: Susan Quaggin, MD Professor & Chief, Division of Nephrology, Northwestern University Feinberg School of Medicine, 303 East Superior, Tarry 10-105, Chicago, IL 60611, or via email to Nephrology Administrator, Rosa V. Pico, at r_pico@northwestern.edu.

Northwestern is an Affirmative Action, Equal Opportunity Employer. Women and Minorities are encouraged to apply. Hiring is contingent upon eligibility to work in the United States.

On the go.

JCI The Journal of Clinical Investigation

Carrier 3:57 PM
JCI - Welcome
m.jci.org/ Google

Current Issue >
Latest articles >
Search the JCI >
January 2012 > December 2011 > Archive >

The JCI, with an Impact Factor of 14.152, is a top-tier research journal that provides free access to all research it publishes. The journal is the publication of the American Society for Clinical Investigation.
Copyright information and usage policies
View the editorial board

m.jci.org